

HIGHER PRESSURE **BULL DOG** RECEIVERS

These special Models are designed specifically for higher pressure requirements for use in R-410A systems. The tough requirements needed for these "Green Label" Models are made to the approved Underwriters Laboratory requirements necessary to meet the 675 p.s.i.g. working pressure.

Particular steel material requirements, along with special welded fabrication are used with our unique die designs to produce these superior high strength receivers. These come complete with a "Leak Pruf"[®] fusible plug installed as well as our powder coated finish. These are made with Rotalock connections for use with our valve and adapters (not included) also used on our other Rotalock receivers shown in the catalog. Rotalock models can be used for either vertical or horizontal mounting.

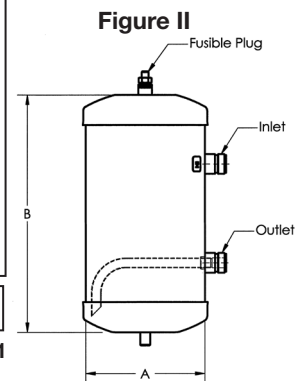
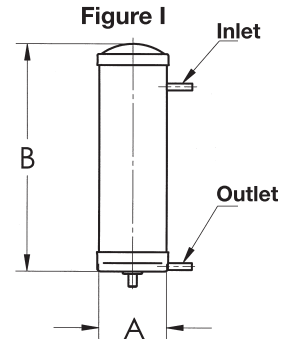
Part Number	R410A Pump Down Capacity*	"A" Diameter	"B" Length	Figure	Inlet & Outlet Connecton	Leak Pruf Fusible Plug
2041	1.3 lbs.	3"	7"	I	1/4" Sweat	Not Required
2040	1.8 lbs.	3"	10"	I	1/4" Sweat	Not Required
3307	1.8 lbs.	3"	10"	II	1" Rotalock	Not Required
3308	3.6 lbs.	4"	10"	II	1" Rotalock	Installed
3309	5.5 lbs.	5"	10"	II	1" Rotalock	Installed
3310	9.0 lbs.	6"	12"	II	1" Rotalock	Installed
3377	14.0 lbs.	6"	18"	II	1" Rotalock	Installed
3378	19.3 lbs.	6"	24"	II	1" Rotalock	Installed
3379	24.6 lbs.	6"	30"	II	1" Rotalock	Installed

*90% AT 90°F 675 PSI Working Pressure

CE marking available upon request.



File No. SA 2400 Vol. 1



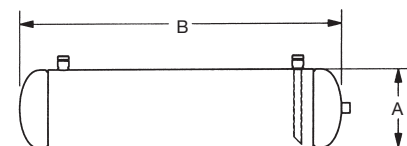
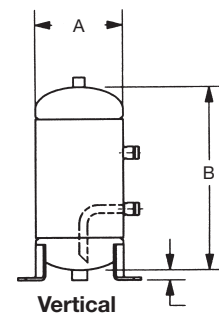
ASME RECEIVERS FOR 600 P.S.I. (R410A)

These larger receivers are assembled by shielded arc weld construction. They are made to ASME code and marked with an attached metal tag. Rotalock connections of 1 1/4"-12 are used on these receivers for valves or fittings (not included) shown on page 15. A 1/2" pipe fitting is supplied for a pressure relief or a pop-off valve (not supplied). All parts are painted with epoxy powder coating. Working pressure for this product line is 600 p.s.i. maximum.

Welded mounting brackets are attached on the vertical models. Adjustable mounting brackets are also available for the horizontal models, but not included or attached to the part. RR7187 (8-5/8" Dia.); RR7188 (10-3/4" Dia.).

These special ASME receivers specifically designed for R410A refrigerant can be customized.

**Part Number	*Pump Down Capacity	"A" Diameter	"B" Length Over Caps	Horz. Or Vert.	Shipping Wt.
3230	28 lbs.	8 5/8"	18"	Vert.	38 lbs.
3231	42 lbs.	10 3/4"	18"	Vert.	60 lbs.
3232	59 lbs.	10 3/4"	24"	Vert.	78 lbs.
3233	59 lbs.	8 5/8"	36"	Horz.	84 lbs.
3236	81 lbs.	8 5/8"	48"	Horz.	100 lbs.
3238	94 lbs.	10 3/4"	36"	Horz.	100 lbs.



Horizontal

Canadian registration numbers issued for all provinces and territories in Canada upon request.

