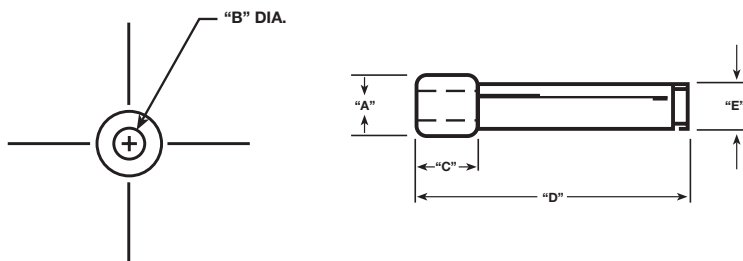


STRAINER ELEMENTS

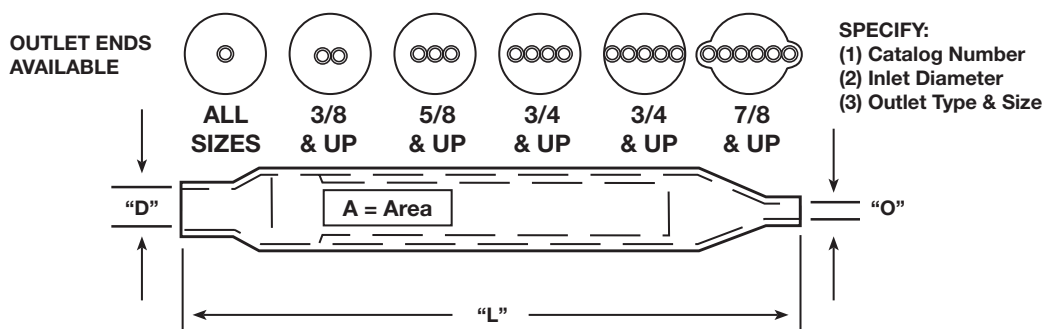
The following are a few of the more popular special strainer elements supplied to O.E.M. accounts in quantities. These strainer elements may be pressed into tubes or can be furnished in cartridges as shown below. **PRICES AVAILABLE ONLY ON SPECIAL QUOTATIONS AND IN QUANTITIES.**



STR. NO.	TO PRESS INTO A TUBE OF	A	B	C	D	E	APPROX. AREA	BINDING
161	3/8 x .032	.311 - .313	.121 - .123	1/4	1-1/4	1/4	.7	Machined Brass
2586	3/4 x .035	.685 - .688	.430	1/2	3-5/8	9/16	6.0	Stamped
178	1 x .035	.936 - .939	.687	1/4	1-9/16	3/4	3.0	Stamped
2487	1 x .035	.936 - .939	.687	1/4	2-1/2	3/4	6.0	Stamped
179	1-1/4 x .035	1.187 - 1.189	.812	5/16	3-5/8	7/8	9.0	Stamped
2582	1-1/4 x .035	1.187 - 1.189	.812	5/16	4-5/8	7/8	12.0	Stamped
2587	2 x .035	1.934 - 1.936	1.437	5/16	2-5/8	1.50	12.0	Stamped
2588	2 x .035	1.934 - 1.936	1.437	5/16	6-1/2	1.50	30.0	Stamped

CARTRIDGE OR PENCIL TYPE STRAINERS

These strainers, made from copper tubing, contain strainer elements shown above. Several hundred special assemblies may be made from the combinations below and general types only are illustrated. **ADDITIONAL CUSTOMER INFORMATION IS REQUIRED TO DEFINE A PARTICULAR STRAINER. QUOTATIONS ARE MADE ONLY UPON SPECIAL APPLICATION AND IN PRODUCTION QUANTITIES.**



Clearance is allowed to provide proper fit for nominal capillary or tube sizes.

TYPE	CARTRIDGE OD & WALL	CAT. LGTH. "L"	STRAINER ELEMENT NO.	STRAINER ELEMENT AREA	Screen Mesh	BINDING	INLET ID's † AVAILABLE "D"	OUTLET ID's † "O"
37B	3/8 x .032	3	161	.7	150	Machined Brass	3/16, 1/4, 5/16 & 3/8	
75S	3/4 x .035	3-5/8	4764	3	100	Stamped	1/4, 3/8, 1/2, 5/8, & 3/4	standard
75SL	3/4 x .035	5-7/8	2586	6	100	Stamped	1/4, 3/8, 1/2, 5/8, & 3/4	cap
100S	1 x .035	3-5/16	178	3	100	Stamped	1/4, 3/8, 1/2, 5/8, & 3/4	
100SL	1 x .035	5-1/4	2487	6	100	Stamped	1/4, 3/8, 1/2, 5/8, & 3/4	
125S	1-1/4 x .035	5-5/16	179	6	100	Stamped	3/8, 1/2, & 5/8	
125L	1-1/4 x .035	6-1/2	177	9	100	Stamped	3/8, 1/2 & 5/8	
200S	2 x .035	6-1/2	2587	12	100	Stamped	3/8, 1/2 & 5/8	
200SL	2 x .035	10	2588	30	100	Stamped	3/8, 1/2 & 5/8	

† NOMINAL

OUTLETS AVAILABLE FOR STANDARD CAPILLARY.



File No. SA 2401 Vol. 2

